

## FEATURES AT A GLANCE

### TRADITIONAL MONITORING TOOLS

- Small number displays
- Limited or no display flexibility
- No business application view without custom coding

### ACI PAYMENT SERVICE MANAGEMENT<sup>TM</sup> POWERED BY PROGNOSIS

- Huge depth - An integrated logical web of displays provided with the product from high-level environment overviews to low-level details
- Complete flexibility provided relating to content and design — no programming required
- Easily brings together composite views of infrastructure and applications that match how you run your business
- Real-time business insight, performance and availability monitoring of ACI<sup>®</sup> Money Transfer System<sup>TM</sup>
- In-depth monitoring of all critical components of Money Transfer System
- Graphical, configurable views into your wholesale payments operations

## PROGNOSIS FOR ACI<sup>®</sup> MONEY TRANSFER SYSTEM<sup>TM</sup>

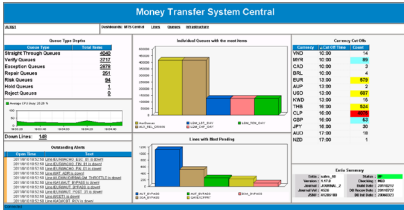
With nearly three quarters of a quadrillion dollars sent through high-value wire transfers in 2013 in the U.S. alone, the efficient and effective operation of wholesale payment environments is critical. Yet while these systems need to be rock solid, the increasingly competitive banking environment demands increased efficiency and reduced processing costs.



## MARKET DATA: WHY THE PRODUCT IS NEEDED

Achieving this difficult outcome of perfect availability and operational efficiency requires business-specific insight into the wholesale payments environment. An intelligent monitoring system can allow organizations to deploy their workforces in the most effective manner and take advantage of extensive automation and straight-through processing without fearing the introduction of difficult to detect problems.

## ACI® MONEY TRANSFER SYSTEM™ CENTRAL



## MONEY TRANSFER SYSTEM LINE CENTRAL

Down Lines				Up Lines			
Area	Bank	Location	Line Name	Area	Bank	Location	Line Name
11	BARC	GB	AUTO_PAYMNT	11	BARC	GB	AUTO_PAYMNT
12	BARC	GB	UK_PAYMNT	12	BARC	GB	UK_PAYMNT
13	BARC	GB	US_PAYMNT	13	BARC	GB	US_PAYMNT
14	BARC	GB	CA_PAYMNT	14	BARC	GB	CA_PAYMNT
15	BARC	GB	JP_PAYMNT	15	BARC	GB	JP_PAYMNT
16	BARC	GB	IN_PAYMNT	16	BARC	GB	IN_PAYMNT
17	BARC	GB	AU_PAYMNT	17	BARC	GB	AU_PAYMNT
18	BARC	GB	HK_PAYMNT	18	BARC	GB	HK_PAYMNT
19	BARC	GB	SG_PAYMNT	19	BARC	GB	SG_PAYMNT
20	BARC	GB	PH_PAYMNT	20	BARC	GB	PH_PAYMNT
21	BARC	GB	TH_PAYMNT	21	BARC	GB	TH_PAYMNT
22	BARC	GB	MY_PAYMNT	22	BARC	GB	MY_PAYMNT
23	BARC	GB	IN_PAYMNT	23	BARC	GB	IN_PAYMNT
24	BARC	GB	IN_PAYMNT	24	BARC	GB	IN_PAYMNT
25	BARC	GB	IN_PAYMNT	25	BARC	GB	IN_PAYMNT
26	BARC	GB	IN_PAYMNT	26	BARC	GB	IN_PAYMNT
27	BARC	GB	IN_PAYMNT	27	BARC	GB	IN_PAYMNT
28	BARC	GB	IN_PAYMNT	28	BARC	GB	IN_PAYMNT
29	BARC	GB	IN_PAYMNT	29	BARC	GB	IN_PAYMNT
30	BARC	GB	IN_PAYMNT	30	BARC	GB	IN_PAYMNT
31	BARC	GB	IN_PAYMNT	31	BARC	GB	IN_PAYMNT
32	BARC	GB	IN_PAYMNT	32	BARC	GB	IN_PAYMNT
33	BARC	GB	IN_PAYMNT	33	BARC	GB	IN_PAYMNT
34	BARC	GB	IN_PAYMNT	34	BARC	GB	IN_PAYMNT
35	BARC	GB	IN_PAYMNT	35	BARC	GB	IN_PAYMNT
36	BARC	GB	IN_PAYMNT	36	BARC	GB	IN_PAYMNT
37	BARC	GB	IN_PAYMNT	37	BARC	GB	IN_PAYMNT
38	BARC	GB	IN_PAYMNT	38	BARC	GB	IN_PAYMNT
39	BARC	GB	IN_PAYMNT	39	BARC	GB	IN_PAYMNT
40	BARC	GB	IN_PAYMNT	40	BARC	GB	IN_PAYMNT
41	BARC	GB	IN_PAYMNT	41	BARC	GB	IN_PAYMNT
42	BARC	GB	IN_PAYMNT	42	BARC	GB	IN_PAYMNT
43	BARC	GB	IN_PAYMNT	43	BARC	GB	IN_PAYMNT
44	BARC	GB	IN_PAYMNT	44	BARC	GB	IN_PAYMNT
45	BARC	GB	IN_PAYMNT	45	BARC	GB	IN_PAYMNT
46	BARC	GB	IN_PAYMNT	46	BARC	GB	IN_PAYMNT
47	BARC	GB	IN_PAYMNT	47	BARC	GB	IN_PAYMNT
48	BARC	GB	IN_PAYMNT	48	BARC	GB	IN_PAYMNT
49	BARC	GB	IN_PAYMNT	49	BARC	GB	IN_PAYMNT
50	BARC	GB	IN_PAYMNT	50	BARC	GB	IN_PAYMNT
51	BARC	GB	IN_PAYMNT	51	BARC	GB	IN_PAYMNT
52	BARC	GB	IN_PAYMNT	52	BARC	GB	IN_PAYMNT
53	BARC	GB	IN_PAYMNT	53	BARC	GB	IN_PAYMNT
54	BARC	GB	IN_PAYMNT	54	BARC	GB	IN_PAYMNT
55	BARC	GB	IN_PAYMNT	55	BARC	GB	IN_PAYMNT
56	BARC	GB	IN_PAYMNT	56	BARC	GB	IN_PAYMNT
57	BARC	GB	IN_PAYMNT	57	BARC	GB	IN_PAYMNT
58	BARC	GB	IN_PAYMNT	58	BARC	GB	IN_PAYMNT
59	BARC	GB	IN_PAYMNT	59	BARC	GB	IN_PAYMNT
60	BARC	GB	IN_PAYMNT	60	BARC	GB	IN_PAYMNT
61	BARC	GB	IN_PAYMNT	61	BARC	GB	IN_PAYMNT
62	BARC	GB	IN_PAYMNT	62	BARC	GB	IN_PAYMNT
63	BARC	GB	IN_PAYMNT	63	BARC	GB	IN_PAYMNT
64	BARC	GB	IN_PAYMNT	64	BARC	GB	IN_PAYMNT
65	BARC	GB	IN_PAYMNT	65	BARC	GB	IN_PAYMNT
66	BARC	GB	IN_PAYMNT	66	BARC	GB	IN_PAYMNT
67	BARC	GB	IN_PAYMNT	67	BARC	GB	IN_PAYMNT
68	BARC	GB	IN_PAYMNT	68	BARC	GB	IN_PAYMNT
69	BARC	GB	IN_PAYMNT	69	BARC	GB	IN_PAYMNT
70	BARC	GB	IN_PAYMNT	70	BARC	GB	IN_PAYMNT
71	BARC	GB	IN_PAYMNT	71	BARC	GB	IN_PAYMNT
72	BARC	GB	IN_PAYMNT	72	BARC	GB	IN_PAYMNT
73	BARC	GB	IN_PAYMNT	73	BARC	GB	IN_PAYMNT
74	BARC	GB	IN_PAYMNT	74	BARC	GB	IN_PAYMNT
75	BARC	GB	IN_PAYMNT	75	BARC	GB	IN_PAYMNT
76	BARC	GB	IN_PAYMNT	76	BARC	GB	IN_PAYMNT
77	BARC	GB	IN_PAYMNT	77	BARC	GB	IN_PAYMNT
78	BARC	GB	IN_PAYMNT	78	BARC	GB	IN_PAYMNT
79	BARC	GB	IN_PAYMNT	79	BARC	GB	IN_PAYMNT
80	BARC	GB	IN_PAYMNT	80	BARC	GB	IN_PAYMNT
81	BARC	GB	IN_PAYMNT	81	BARC	GB	IN_PAYMNT
82	BARC	GB	IN_PAYMNT	82	BARC	GB	IN_PAYMNT
83	BARC	GB	IN_PAYMNT	83	BARC	GB	IN_PAYMNT
84	BARC	GB	IN_PAYMNT	84	BARC	GB	IN_PAYMNT
85	BARC	GB	IN_PAYMNT	85	BARC	GB	IN_PAYMNT
86	BARC	GB	IN_PAYMNT	86	BARC	GB	IN_PAYMNT
87	BARC	GB	IN_PAYMNT	87	BARC	GB	IN_PAYMNT
88	BARC	GB	IN_PAYMNT	88	BARC	GB	IN_PAYMNT
89	BARC	GB	IN_PAYMNT	89	BARC	GB	IN_PAYMNT
90	BARC	GB	IN_PAYMNT	90	BARC	GB	IN_PAYMNT
91	BARC	GB	IN_PAYMNT	91	BARC	GB	IN_PAYMNT
92	BARC	GB	IN_PAYMNT	92	BARC	GB	IN_PAYMNT
93	BARC	GB	IN_PAYMNT	93	BARC	GB	IN_PAYMNT
94	BARC	GB	IN_PAYMNT	94	BARC	GB	IN_PAYMNT
95	BARC	GB	IN_PAYMNT	95	BARC	GB	IN_PAYMNT
96	BARC	GB	IN_PAYMNT	96	BARC	GB	IN_PAYMNT
97	BARC	GB	IN_PAYMNT	97	BARC	GB	IN_PAYMNT
98	BARC	GB	IN_PAYMNT	98	BARC	GB	IN_PAYMNT
99	BARC	GB	IN_PAYMNT	99	BARC	GB	IN_PAYMNT
100	BARC	GB	IN_PAYMNT	100	BARC	GB	IN_PAYMNT

## BUSINESS VALUE AT A GLANCE

- Provides detailed operational insight into transactions processing, queue monitoring and exception monitoring
- Provides real-time visibility into lines availability and malfunction
- Enhances infrastructure monitoring by including real-time monitoring of Money Transfer System-specific infrastructure and databases (Entia)
- Optimizes personnel productivity through the real-time monitoring of queues and queue details
- Increases operational performance through alerting on approaching deadlines and cut-offs
- Alerts on the complete Money Transfer System message library (Enguard alert library) and many additional customer-defined alerts
- Provides historical reporting and replay functionality
- Integrates with Money Transfer System not only through the JASI interface, but also via additional Money Transfer System components
- Helps you monitor service-level agreements and perform within their limits, avoiding partner and federal penalties
- Provides monitoring interoperability with Money Transfer System, ACI Proactive Risk Manager™, BASE24® and BASE24-eps®

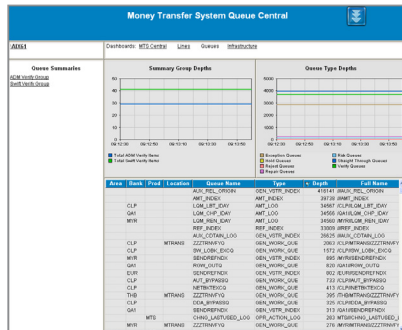
## PROGNOSIS FOR ACI® MONEY TRANSFER SYSTEM™

Merging together productivity, performance and operations, Prognosis for ACI Money Transfer System™ is specifically designed to provide unprecedented insight into Money Transfer System. Prognosis for ACI Money Transfer System allows you to ensure maximum uptime of Money Transfer System while maximizing the efficiency of your operations.

## ENSURES THE AVAILABILITY OF EVERY COMPONENT OF ACI MONEY TRANSFER SYSTEM™

Prognosis for ACI Money Transfer System provides out-of-the-box functionality that monitors all of the components of Money Transfer System to ensure they are operating as expected. When problems occur you can be immediately notified by email, SMS, alerts screen, etc.

# MONEY TRANSFER SYSTEM QUEUE CENTER



MERGING TOGETHER PRODUCTIVITY, PERFORMANCE AND OPERATIONS, PROGNOSIS FOR ACI MONEY TRANSFER SYSTEM™ IS SPECIFICALLY DESIGNED TO PROVIDE UNPRECEDENTED INSIGHT INTO ACI® MONEY TRANSFER SYSTEM™, ENSURING MAXIMUM UPTIME OF MONEY TRANSFER SYSTEM WHILE MAXIMIZING THE EFFICIENCY OF YOUR OPERATIONS.

## DELIVERS GRAPHICAL INSIGHT IN THE MONEY TRANSFER SYSTEM QUEUES

Prognosis displays constantly updated information about the Money Transfer System queues that are important in your environment. This information is ideal for wallboards that allow the allocation of operators to the most important queues. These screens can also be customized to provide ideal views for your wire room supervisors and other stakeholders.

## PROVIDES COMPLETE INSIGHT INTO PENDING PAYMENTS FOR ALERTING AND DISPLAY

The system can provide visibility into the actual payments on important queues. This can be used to generate alerts on messages that are not expected to be present on the queues they are on. This information can also be used to provide dashboards that show the upcoming work.

## ALERTS ON THE COMPLETE MONEY TRANSFER SYSTEM MESSAGE LIBRARY

Out of the box, Prognosis for ACI Money Transfer System understands all of the messages that are logged by Money Transfer System and has preconfigured the most important items for alerting. Users can customize this alerting to their needs.

## DESIGNED SPECIFICALLY FOR MONEY TRANSFER SYSTEM

Prognosis for ACI Money Transfer System is fully integrated with Money Transfer System. We have already done the extensive data mapping and created the proper integration points for you, so that you can just bring in the solution and begin using it. Through interaction with many Money Transfer System customers, we have designed out-of-the-box dashboards that are specific to the needs of the wholesale customer. The displays are arranged for the department- and role-specific needs of your organization. Adopting any of these screens for your specific environment does not require services — you will be able to do it yourself.

ACI Worldwide, the Universal Payments (UP) company, powers electronic payments for more than 5,100 organizations around the world. More than 1,000 of the largest financial institutions and intermediaries, as well as thousands of global merchants, rely on ACI to execute \$14 trillion each day in payments and securities. In addition, myriad organizations utilize our electronic bill presentment and payment services. Through our comprehensive suite of software solutions delivered on customers' premises or through ACI's private cloud, we provide real-time, immediate payments capabilities and enable the industry's most complete omni-channel payments experience.

**LEARN MORE**



[WWW.ACIWORLDWIDE.COM](http://WWW.ACIWORLDWIDE.COM)



[@ACI\\_WORLDWIDE](https://twitter.com/ACI_WORLDWIDE)



[CONTACT@ACIWORLDWIDE.COM](mailto:CONTACT@ACIWORLDWIDE.COM)

Americas +1 402 390 7600  
Asia Pacific +65 6334 4843  
Europe, Middle East, Africa +44 (0) 1923 816393

© Copyright ACI Worldwide, Inc. 2017  
ACI, ACI Worldwide, ACI Payment Systems, the ACI logo, ACI Universal Payments, UP, the UP logo, ReD, PAY.ON and all ACI product names are trademarks or registered trademarks of ACI Worldwide, Inc., or one of its subsidiaries, in the United States, other countries or both. Other parties' trademarks referenced are the property of their respective owners.

AFL6541 10-17



## PROGNOSIS PULSE MONITOR FOR MONEY TRANSFER SYSTEM

Designed exclusively for Money Transfer System, Pulse Monitor is a module that delivers real-time visibility into queue and account status, ensuring your system is processing transactions as expected without delay. This secure, web-based alternative to Workflow Monitor delivers a summary of account information which can be used for the efficient management of daily settlement procedures.

Through an interactive graphical configuration interface, Pulse Monitor allows end users to create custom views of queues of interest and custom dashboards. This configuration provides up-to-the-minute insight for monitoring the flow of transactions between Money Transfer System and other payment networks, wire services and internal systems.

Pulse Monitor can be easily upgraded to the full Prognosis solution which provides expanded real-time business insight, performance and availability monitoring of Money Transfer System.

## HIGHLY GRAPHICAL USER INTERFACE

Prognosis for ACI Money Transfer System utilizes a highly graphical user interface coupled with user defined alerts and notification processes. All screens are designed to facilitate the logical organization of your wholesale department, so users can look at information that is important to their work and responsibilities. Prognosis for ACI Money Transfer System begins with high-level summary screens that allow you to drill down to specific payments, transactions, alerts, lines and queues. Unlike other monitoring solutions, with Prognosis for ACI Money Transfer System you are in charge of displaying the information critical to your environment and the needs of your organization. Through the one-solution multiple-screens product, Prognosis for ACI Money Transfer System breaks silos across your organization to deliver visibility of the payments system across wire rooms, IT operations, Money Transfer System operations and key business stakeholders.

## THE ACI ADVANTAGE

Prognosis for ACI Money Transfer System brings you the outstanding combination of a leading wholesale payments engine and a leading real-time payments monitoring solution. Through our constant interaction with payment customers, our pursuit of market excellence and the expertise of our system designers, we are able to bring you a single comprehensive solution that will decrease your operational costs, ensure the availability of your system, increase the effectiveness of your staff and help you manage your payments business with better efficiency.